

Freeze Dryer



BK-FD10S

BK-FD10P

BK-FD10T

BK-FD10PT

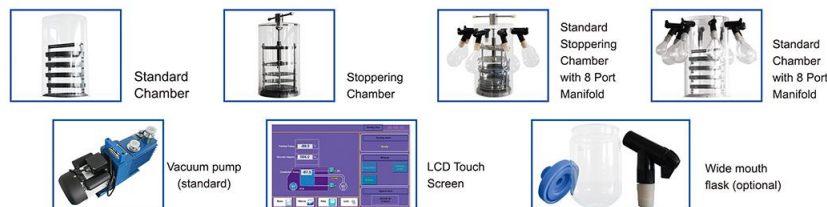
Introduction

Vacuum freeze-drying technology is also known as sublimation drying. The principle is to freeze a sample containing water in advance, and then sublimate its moisture under vacuum. The original biological, chemical and physical properties of the freeze-dried samples remain basically the same, and they are easy to be stored for a long time. After adding water, the samples can be restored to the state before freeze-drying, and their original biochemical characteristics can be maintained. Therefore, freeze-drying technology is widely used in medicine, food, chemical, biological products and other fields.

Features

- * Compressor, energy saving and high efficiency, low noise, long life.
- * Vacuum pump, small volume, pumping speed, low noise, can achieve higher vacuum.
- * Integrated design, compact structure, easy to use.
- * Environmentally friendly refrigerant, ODP=0.
- * With defrosting function, safe and reliable.
- * The cold trap and operating table are made of stainless steel, corrosion resistant and easy to clean.
- * The transparent cover of the drying chamber is made of aviation acrylic material, with high strength and no bonding.
- * Large cold trap opening size, with pre-freezing function, no need for low temperature refrigerator.
- * Professional gas diversion technology, high freeze-drying efficiency, and uniform ice capture.

Accessories



Technical Parameters

Model	BK-FD10S	BK-FD10P	BK-FD10T	BK-FD10PT
Type	Standard chamber	Standard chamber with 8 port manifold	Stoppering chamber	Stoppering chamber with 8 port manifold
Freeze Drying Area	0.12m ²		0.08m ²	
Tray	4 pcs		3 pcs	
Height Between Trays	50mm		/	
Cold Trap Temperature	≤-60℃(No load)(-80℃ optional)			
Cold Trap Capacity	6L			
Cold Trap Size (Diameter*H)	Φ219*140mm			
Vacuum Degree	≤5 Pa			
Water Capture Capacity	3-4L/24h			
Tray Size (D*H)	Φ200*20mm		Φ180*20mm	
Freeze Drying Time	36h			
Loading Capacity/Shelf (Liquid)	1.2L		0.8L	
Total Loading Capacity (Liquid)	2.4L		1.6L	
Drying Chamber Size (Diameter*H)	Φ260*420mm	Φ260*465mm		
Total Qty. Of Vial Φ22	/	/	147	147
Total Qty. Of Vial Φ16	/	/	297	297
Total Qty. Of Vial Φ12	/	/	492	492
Refrigerant	-60℃: R600a, R23 -80℃: R404a, R23			
Cooling System	Standard: Air cooling			
Power Supply	Standard: 220V 50Hz Optional: 220V 60Hz			
Power Consumption	1300W			
Standard Accessory	Vacuum pump 2L/S, Material tray*4(Material tray*3 for T/PT), Drying rack*1, Cover*1, Acrylic bucket*1(all models)			
	Conical-mouth flask100ml*2pcs, 200ml*2pcs, 250ml*2pcs, 500ml*2pcs, Switch valve*8 pcs (only for model BK-FD10P/PT), USB port			
Optional Function & Accessory	Equipment moving frame, vacuum pump of other specifications, oil mist filter,and other customization(for all models)			
	600ml/1200ml Wide-mouth flask (for BK-FD10P/PT)			
External Size (W*D*H), mm		640*610*550		
Package Size(W*D*H), mm	Main Body	735*720*760mm		
	Accessory	720*605*560mm		
Gross Weight(kg)	Main Body	-60℃: 80kg		
		-80℃: 98kg		
	Accessory	45kg	49kg	54kg